



PRATLEY

www.pratley.com

KLIIK-LOK® JUNCTION BOX

Ex e/Ex n
&
Standard



CERTIFICATION



I.A. No. SABS S/02-615(R1)

Ex e II T6
Ex nA II T6
DIP A TA=T6
IP68 (2m-cont)
IP 66
IEC / SANS 60079-0
IEC / SANS 60079-7
IEC / SANS 60079-15
IEC / SANS 60079-31
IEC / SANS 60529

Suitable for use in
Zone 1, 2, 20, 21 and 22

Ex e II T6
Ex tD A21
IP68 (2m)T85°C
(Sira 06ATEX3085X)
IEC Ex SIR 06.0029X



PATENT NUMBERS
2002/10139 (SA)
2002/3658 (SA)
2002/3657 (SA)
2002/4538 (SA)
2002/10142 (SA)
2375439 (Great Britain)

FEATURES & BENEFITS

- **5-Way box with 4 side entries:**
2 Side entries blanked off with plugs.
2 Open side entries &
1 Drillable bottom entry.
- **Revolutionary "Click Lock" lid design** eliminates cross threading problems.
- **Domed lid for easy termination of conductors.**
- **Impact resistant and corrosion free.**
- **Long lasting IP68 replaceable sealing gasket.**
- **Patented, invertible cranked terminal rail ensures lots of space for insertion of conductors into Kwikblok® terminals.**
- **Integrated earth continuity between entries using patented earthing harness.**
- **4 Raised mounting feet prevents rocking on uneven surfaces.**



METHODS OF FITTING PRATLEY KWIKBLOKS®

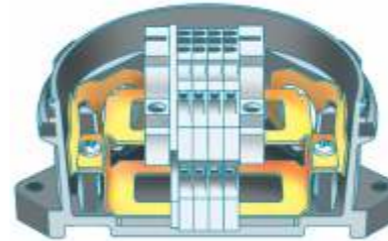
Standard or inverted Brass Terminal Rail

Patented cranked terminal rail allows easy fitting of wires into connectors.



Klik-Lok® Box fitted with Piggyback Rails

Illustration shows fitting PIGGYBACK rails to allow for 2 layers of Kwikbloks®. This method is not suitable for miniature Kwikbloks®.



Cutaway illustration of Klik-Lok® Junction Box

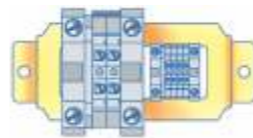
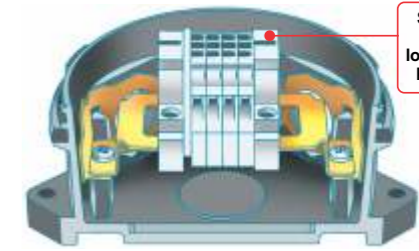


Illustration shows fitting of Standard IK3 or IK5 Kwikbloks® and miniature Kwikbloks® clip INSIDE the rail. Miniature Kwikbloks® clip INSIDE the rail.

For detailed fitting instructions see www.pratley.com

Klik-Lok® Box fitted with Standard Terminal Rail

Illustration shows standard method of fitting Pratley Kwikbloks® to terminal rail.

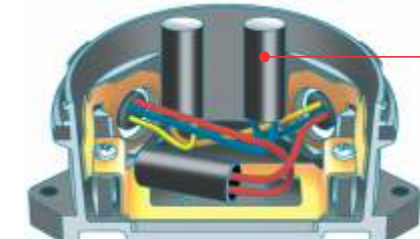


Cutaway illustration of Klik-Lok® Junction Box

SAFETY NOTE:
For Zone 1 locations use Ex e Kwikbloks® only.

Klik-Lok® Box fitted with Inverted Terminal Rail

Illustration shows inverted terminal rail and fitting of Pratley non-sparking end connectors with insulating sleeves. The inverted rail also facilitates earthing continuity with the bottom entry.



Cutaway illustration of Klik-Lok® Junction Box

SAFETY NOTE:
End connectors not for use in Ex e (Zone 1) locations.

KLIIK-LOK® JUNCTION BOX ACCESSORIES

TRANSPARENT (POLYCARBONATE) LID

The Polycarbonate lid is clear, almost unbreakable, IP68, Ex e and Ex n rated. Allows easy inspection of the connectors.



BLACK LID

The Black lid is almost unbreakable, IP68, Ex e and Ex n rated.



NON-SPARKING END CONNECTORS & INSULATING SLEEVES

Non-Sparking End Connectors have a pressure pad so that the clamping screw does not bear directly onto the core. The insulating sleeves are easily removed for inspection but will not vibrate loose.



TRANSPARENT (POLYCARBONATE) LIDS					BLACK LIDS				
Box Size	Nº 1 Ex e/n	Nº 1 Standard	Nº 2 Ex e/n	Nº 2 Standard	Box Size	Nº 1 Ex e/n	Nº 1 Standard	Nº 2 Ex e/n	Nº 2 Standard
Catalogue Number	57281	57297	57283	57299	Catalogue Number	57280	57296	57282	57298
Usual Pack Quantity	1	1	1	1	Usual Pack Quantity	1	1	1	1

PRATLEY NON-SPARKING END CONNECTORS					
Connector Size	Dinky	Small	Medium	Large	Extra Large
Catalogue No.	63200	63201	63202	63203	63204
Usual Pack Qty.	100	50	20	20	10

REPLACEABLE SEALING GASKET

Assures perfect IP68/66 seal for life of plant and makes inspection and repair quick and easy. A special labyrinth design ensures an even, all-round seal that has been tested to 60 kPa of water pressure.



Box Size	Nº 1	Nº 2
Catalogue Number	57269	57270
Usual Pack Quantity	1	1

LOCKNUTS

Additional steel or brass locknuts can be ordered separately.



Brass Locknut (Nickel plated or unplated)

BRASS LOCKNUTS		
Box Size	Nº 1	Nº 2
Catalogue Number	02880	02882
Usual Pack Quantity	1	1

NICKEL PLATED BRASS REDUCING LOCKNUTS FOR Nº 2 BOX		
Thread Size	25-16 mm	25-20 mm
Cat. No.	57290	57291
Pack Qty	1	1

Nickel Plated Brass reducing Locknut

IDENTIFICATION TAG

For easy recording of inspection dates or for circuit identification.



ID TAG	
Catalogue No.	57266
Usual Pack Qty.	10

PRATLEY Ex e KWIKBLOKS for Ex e Cable Boxes (Sales Leaflet No. 061)



Rail for Nº 1 Box

Rail for Nº 2 Box

CRANKED BRASS TERMINAL RAIL

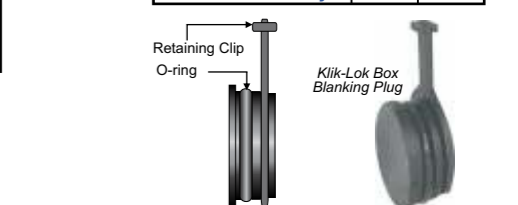
The unique design allows conductors to pass underneath and permits an additional rail to be added to the box - inverted. Additional Kwikbloks® can be added as required.

PRATLEY INSULATING SLEEVES					
Sleeve Size	2/D	3/S	4/M	5/L	6/XL
Catalogue No.	04014	04015	04016	04017	04018
Usual Pack Qty.	50	25	20	10	10

KLIIK-LOK BOX BLANKING PLUGS

Specialty designed blanking plug with removable retaining clip which locks the plug into a secured position (only to be used in the Klik-Lok Box).

KLIIK-LOK BOX BLANKING PLUGS		
Box Size	Nº 1	Nº 2
Catalogue Number	57292	57293
Usual Pack Quantity	1	1



CRANKED BRASS TERMINAL RAIL		
Box Size	Nº 1	Nº 2
Catalogue Number	57267	57268
Usual Pack Quantity	1	1

Pratley (Pty) Limited (Reg. No. 1996/003890/07) An Affiliate of the Pratley Group of Companies

Jackson Street • Fectoria • Krugersdorp • Gauteng - Telephone +27 11 955 2190/8 • Fax +27 11 955 3918

PO Box 3055, Kenmare 1745 • Gauteng • South Africa - www.pratley.com

PRATLEY KLIK-LOK® JUNCTION BOXES

Ex e/n & Standard (N° 1 & N° 2)

One feature that sets the Pratley Klik-Lok® Junction box apart from all others is its **UNIQUE CAM ACTION** lid. It totally eliminates cross threading and renders maintenance inspections much easier and faster. It also maintains the integrity of the gasket seal by ensuring an even, predetermined pressure.

HIGH DOMED LID

Provides space to work and allows the quick and easy insertion of conductors into Kwikbloks® above the level of the rim. (Lid is also available in black or transparent polycarbonate, as depicted here).

IDENTIFICATION TAG

Supplied with the box for easy circuit identification or for easy recording by inspectors. This tag is attached to a cable tie, which passes through the lid securing lug on the Klik-Lok® latch.

5-WAY BOX WITH 4 OPEN ENTRIES

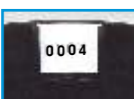
The box is supplied standard with 4 open entries & one drillable bottom entry. 2 side entries are blanked off using Klik-lok® blanking plugs. Closed gland entry may be drilled out, as required, using a Hole Saw. Glands or conduit can be fitted to the entries.

LID SECURITY LUG ON KLIK-LOK® LATCH

Permits quick and simple lid security, using a tie-wrap or lock. Ensures legal compliance with SANS 10142-1 and SANS IEC 60079-0, which require that a tool be used to remove a cover, on enclosures in hazardous locations respectively.

KLIK-LOK® BOX SERIAL NUMBER

The serial number for each box is indicated on this insert. (Only for factory fitted Ex e Boxes).



REDUCING LOCKNUT

This accessory allows smaller glands to be fitted to the N° 2 box. 25 mm - 16 mm & 25 mm - 20 mm

MOUNTING FOOT

4 of these mounting lugs prevent rocking on uneven surfaces and the box's tough plastic design prevents any cracking while tightening the lug screws. Embossed lettering indicates the size of screw to be used (M6) and the exact measurement for hole centres, making drilling quick and easy.

LID SECURING LUG & LID SECURING STRAP

Eliminates frustration by ensuring that you never drop or lose the lid, and ensures safety in high bays.



PRATLEY CABLE GLANDS FOR ARMOURED OR UNARMOURED CABLE

The No. 1 Klik-lok® Box accepts Pratley No. 0s, No. 0 and No. 1 (20 mm) Cable Glands. The No. 2 Box accepts all Pratley No. 2 (25 mm) Cable Glands. (Pratley Enviroglands and Enviro Compression Glands are the preferred option, as depicted here). **See also - Reducing locknut (for smaller glands).**

TOUGH REINFORCED ENGINEERING PLASTIC

Makes the box completely impact-resistant and corrosion-resistant.

CRANKED BRASS TERMINAL RAIL

SEE THIS! This patented rail makes termination a breeze. In the normal raised position conductors can be passed under the rail with a generous radius for easy fitting into Kwikbloks®. Alternatively, two rails can be 'piggybacked', to allow for the fitting of 2 layers of Kwikbloks®. The rail can also be inverted to maximize space. (Additional rails can be purchased separately). IK3 or IK5 Kwikbloks® can be fitted to the rails, while Mini Kwikbloks® (HK3) may be clipped onto the inside of the rail.

REPLACEABLE SEALING GASKET

Assures a perfect IP68/66 seal and makes inspection and repair quick and easy. A specially formed labyrinth ensures an even, all-round seal that has been tested to 60 kPa of water pressure.

INTERNAL EARTH LUG

Screw and washer.

BRASS EARTHING HARNESS

Ensures earthing continuity between all entries and terminal rail.

KLIK-LOK® CAM ACTION

The use of locking cams ensures quick and easy access to the box and eliminates cross-threading problems

BLANKING PLUG

Removable Blanking Plug with o-ring & retaining clip, which locks the plug into a secured position.

KLIK-LOK® JUNCTION BOX ORDER CHART

This cable box is supplied complete with a gasket, cranked brass terminal rail with two screws, brass earthing harness, securing strap, cable tie and identification tag. Always use the Catalogue Number when ordering and specify "black" or "transparent" (polycarbonate) lid.

Size	Ex e/n Klik-Lok Box		Standard Klik-Lok Box		Usual Pack Qty.
	C/W Black Lid	C/W Transparent Lid	C/W Black Lid	C/W Transparent Lid	
N° 1	57273	57274	57284	57285	1
N° 2	57275	57276	57286	57287	1

PRATLEY GLAND SELECTION CHART

This box is designed to be fitted with Pratley Cable Glands. The chart below shows the correct type of Pratley Glands for armoured or unarmoured cables, hazardous or corrosive applications.

(The Pratley Ex e Envirogland or Pratley Ex e/d Enviro Compression Gland are the recommended choice for all applications).

GLAND SELECTION FOR N° 1 KLIK-LOK® JUNCTION BOX					
THE FOLLOWING GLANDS CAN BE FITTED:					
ARMOURED CABLE	Ex e/n	Cat. No.	Corrosive Area	Classified Locations	
Ex e Enviro Gland	No. 0s	• 31999	•	Zone 1, 2 21 & 22	
	No. 0	• 32000			
	No. 1	• 32001			
Ex e "Ultra" Gland	No. 0	• 77150		Zone 1, 2 21 & 22	
	No. 1	• 77151			
Ex e Gland	No. 0	• 21100		Zone 1, 2 21 & 22	
	No. 1	• 21200			
Adjustable Gland with Long Shroud, Inner seal Kit & Nipple Gasket	No. 0	• 01001	•	Zone 21 & 22	
	No. 1	• 02002			
UNARMOURED CABLE	Ex e/n	Cat. No.	Corrosive Area	Classified Locations	
Ex e/d Enviro Compression Gland	No. 0	• 32100	•	Zone 1, 2 21 & 22	
	No. 1	• 32101			
Ex e Brass Compression Gland	No. 0	• 22188		Zone 1, 2 21 & 22	
	No. 1	• 22189			
Brass Compression Gland	No. 0	• 12068		Zone 21 & 22	
	No. 1	• 12069			
Tufflon Compression Gland	No. 0s	• 75202	•	Zone 21 & 22	
	No. 0L	• 75203			
Adjustable Gland fitted with Comp. Conversion Kit & Nipple Gasket	No. 0	• 01001		Zone 21 & 22	
	No. 1	• 02002			

GLAND SELECTION FOR N° 2 KLIK-LOK® JUNCTION BOX

GLAND SELECTION FOR N° 2 KLIK-LOK® JUNCTION BOX					
THE FOLLOWING GLANDS CAN BE FITTED:					
ARMOURED CABLE	Ex e/n	Cat. No.	Corrosive Area	Classified Locations	
Ex e Enviro Gland	No. 00	• 31998	•	Zone 1, 2 21 & 22	
	No. 2	• 32002			
Ex e "Ultra" Gland	No. 2	• 77152		Zone 1, 2 21 & 22	
Ex e Gland	No. 2	• 21300		Zone 1, 2 21 & 22	
Adjustable Gland with Long Shroud, Inner seal Kit & Nipple Gasket	No. 2	• 02003	•	Zone 21 & 22	
UNARMOURED CABLE	Ex e/n	Cat. No.	Corrosive Area	Classified Locations	
Ex e/d Enviro Compression Gland	No. 2	• 32102	•	Zone 1, 2 21 & 22	
	No. 2	• 22190			
Brass Compression Gland	No. 2	• 12070		Zone 21 & 22	
Tufflon Compression Gland	No. 2	• 75108	•	Zone 21 & 22	
Adjustable Gland fitted with Comp. Conversion Kit & Nipple Gasket	No. 2	• 02003		Zone 21 & 22	

*Note: With reducing locknut No. 0s, No. 0 and No. 1 Enviro and Enviro compression Glands can also be fitted to the No. 2 Box.

KWIKBLOK® SELECTION CHART

See chart below for number of Pratley Kwikbloks® that can be fitted per rail (including end plates and end clamps).

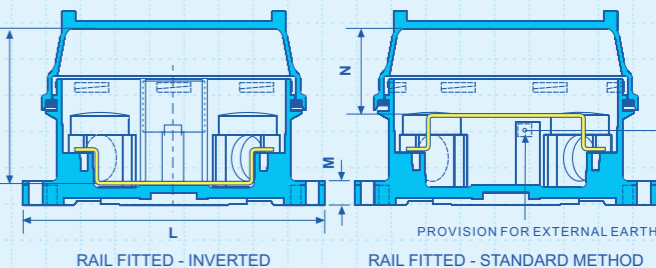
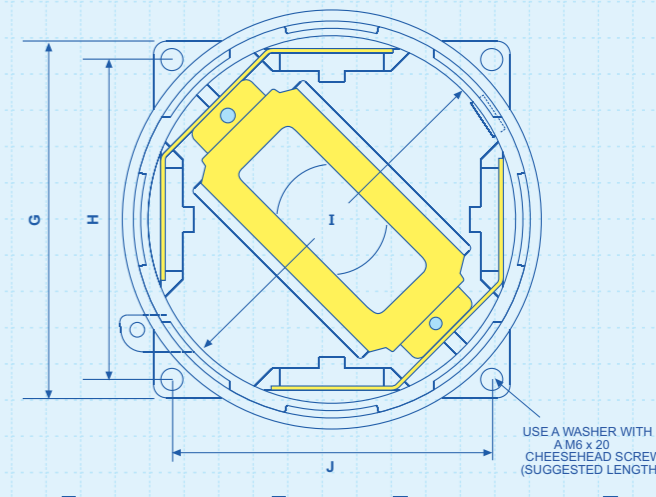
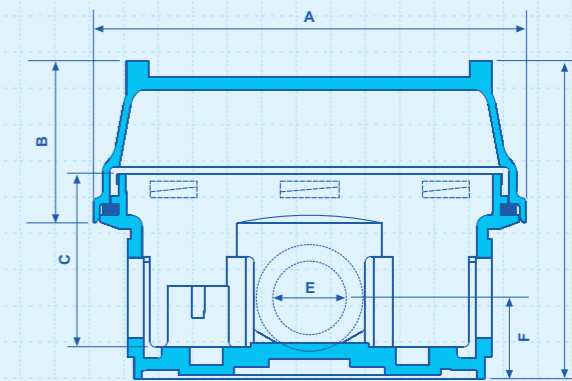
Box Size	NUMBER OF PRATLEY KWIKBLOKS® PER KLIK-LOK® BOX						
	IK3 750/800V 27A	IK5 750/800V 36A	IK10 750/800V 67A	IK16 750/800V 87A	IK25 750/800V 115A	IK50 750/800V 150A	IK70 750/800V 220A
↓	Ex e IK3 550V 15A	Ex e IK5 550V 21A	Ex e IK10 550V 37A	Ex e IK16 550V 47A	Ex e IK25 550V 63A	Ex e IK50 550V 98A	Ex e IK70 550V 121A
	Max.	Max.	Max.	Max.	Max.	Max.	Max.
1	8	8	6	5	N/A	N/A	N/A
2	15	13	9	7	6	4	3

Max.: Number of Kwikbloks® that can be fitted.

The box can be fitted with Pratley end connectors as well, but not for Ex e (Zone 1) locations. IK3 terminals are the only size terminal that can be used as "piggyback terminals" inside the box.

SAFETY NOTE: In Zone 1 locations use only Ex e approved Pratley Kwikbloks®
NB! 4.4 W maximum dissipated power on box N° 1 & 5.8 W maximum dissipated power on box N° 2

DIMENSIONS & SPECIFICATIONS



DIMENSIONS - KLIK-LOK® JUNCTION BOX		
DESCRIPTION	N° 1 BOX	N° 2 BOX
A Outer Diameter of Box	119.5 mm	149.0 mm
B Lid Height	45.0 mm	56.3 mm
C Internal Depth	47.6 mm	63.7 mm
D Overall Height of Box	86.5 mm	110.5 mm
E Entry Thread	M20 x 1.5P	M25 x 1.5P
F Height from Bottom to Centre of Entry	20.9 mm	28.0 mm
G Base Width	97.0 mm (Square)	127.0 mm (Square)
H Mounting Lug Centres	87.0 mm	108.0 mm
I Internal Diameter of Box	99.0 mm	120.0 mm
J Mounting Lug Centres	87.0 mm	108.0 mm
K Internal Depth of Box with Lid	66.0 mm	89.0 mm
L Base Width Across Corners	134.0 mm	173.0 mm
M Base Height	11.0 mm	11.0 mm
N Height from Top of Rail to Inside of Lid	37.0 mm	46.0 mm
O External Earth from Bottom of Box	31.0 mm	43.0 mm

SPECIFICATION GUIDE (Ex e/n Box)

- The Junction Box must:**
1. Carry the CE mark plus SABS, ATEX and IEC Ex certification and be IP68 rated in accordance with SANS 60529.
 2. Comply with SANS 60079-0, 60079-7, 60079-15 and SANS 60079-31 for use in Zone 1, 2, 20, 21 and 22 hazardous locations.
 3. Be made from tough, black reinforced engineering plastic.
 4. Be supplied with a cranked brass invertible terminal rail for the fitting of rail mounted connectors.
 5. Be supplied with a brass earthing harness, so that the earthing system of the box is integrated between the box entries and rail.
 6. Have a high domed cam action lid incorporating a replaceable sealing gasket for easy maintenance and IP68 compliance.
 7. Be supplied with a security tag, to ensure compliance with SANS and IEC standards regarding access to electrical junction boxes.

SPECIFICATION GUIDE (Standard Box)

- The Junction Box must:**
1. As above except Paragraph 1 & 2 to be replaced with:-
Be IP68 rated in accordance with SANS 60529
- *Note: Specifiers may use this wording to specify the Pratley Klik-Lok® junction box.