

VENUS

SOLAR LED
FLOOD LIGHT



VENUS

SOLAR LED FLOOD LIGHT

What is it?

VENUS is brand new and premium quality solar led flood light , specifically developed in 2021 for the clients who have high demands in out look,design, finishing, brightness, control options, packing and after-sale service. . It is superior to all other models on market. VENUS is made with the highest quality level to satisfy and beyond customers' all quality expectation

Unlike most solar lighting that will not operate when the solar panel is exposed to sunlight, we have installed a custom program that allows you to use the remote to turn on the floodlight freely regardless of external light conditions. VENUS will be the perfect solar light to expand your business.

OEM are welcomed.

Key Features ▶



Environmental
Protection



Remote
Setting



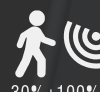
2000 Cycles
LifePO4 Battery



Electricity
Bills free



High luminous
efficiency



30%+100%

Motion Sensor
Detection



ON - OFF

Dusk to Dawn
Auto ON/OFF



IP 65

IP65
Waterproof

BACK GROUND

Solar LED floodlight is the latest combination of advanced battery technology and solar panel as well as led technology. It has become very popular recently because of its superb mobility, easy installation, and cost-effectiveness. It is widely used for many applications as garden lighting, billboard lighting, carport lighting, yard lighting, warehouse lighting, parking lighting, etc.

One research in 2020 showed all customers are strongly positive and believe there are huge demands for solar flood light in their local market. More than 90% of customers are not satisfied with the quality of existing solar flood light on the market. VENUS solar flood light is specially developed with its clear and high-quality positioning to satisfy all the expectations of premium customers. Different from models on market, VENUS solar flood light is making a lot of improvements:

1. Equipped with brand new lifepo4 battery instead of used ones from E-vehicles.
2. Equipped with 2.4G remote with 360° signal transmission, more sensitivity and longer distance
3. Equipped with microwave sensor, multi-lighting functions optional.
4. Equipped with the highest lighting efficiency LED chip up to 200lm/w max.
5. Equipped with a separated adapter cable for more easier connection.
6. Equipped with stainless steel ON/OFF button.
7. Improved installation method of solar panel, more user-friendly installation.



POSITIONING

Designing Concept

VENUS solar floodlight is designed with an aesthetic appearance, simple slim curvy, and more modern.

Quality Positioning

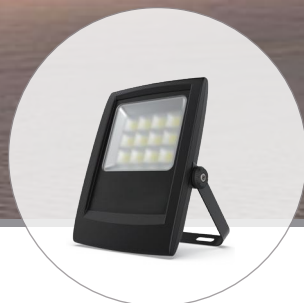
Especially designed for high-end customers with stable quality, smooth and fine workmanship, perfect after-sales support.

Multi-Function

Users can customize the lighting program freely as needed, support lighting up at day time especially.



V2-PRO



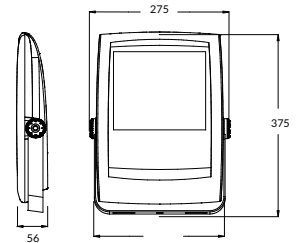
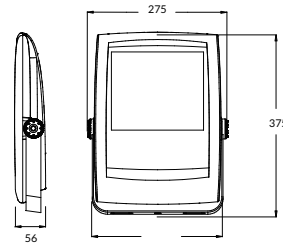
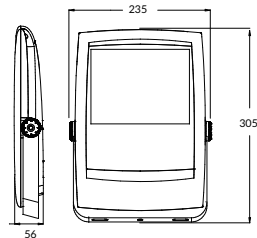
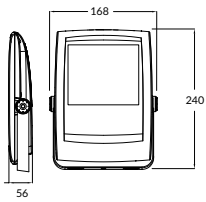
V4-PRO



V6-PRO



V8-PRO



SPECIFICATION

Model	V2-PRO	V4-PRO	V6-PRO	V8-PRO
Led power (max)	4.8W max	9.0W max	13.5W max	18.5W max
Luminous flux (max)	880lm	1,680lm	2,480lm	3,280lm
Fixture dimension	240*168*56mm	305*235*56mm	375*275*56mm	375*275*56mm
Solar panel	12W 10V	25W 10V	35W 10V	50W 10V
Lithium battery	6.4V 38.4WH	6.4V 76.8WH	6.4V 115WH	6.4V 154WH
Fixture color	White / Grey / Black			
Color tempature	3000K / 4000K / 6000K			
Housing material	Aluminium die casting			
Remote control	2.4G radio remote			
Charging time	4.5 hours			
Discharging time	>15 hours			
Working temp.	-15 °C ~ +70 °C			
Connect cable	4.5 meters			
IP rate	IP65			

Certificates CE ROHS, CB

Representantes Sinteg / fono +56 229668227 / Email Contacto@sinteg.d / web www.sinteg.d



2.4G remote control

Long distance with 360 degrees signal transmission, one remote can control multi lights at same time in one area.



lifepo4 battery

Brand new, ultra long lifetime, big capacity of LifePO4 battery pack is built inside guarantees system to work stably



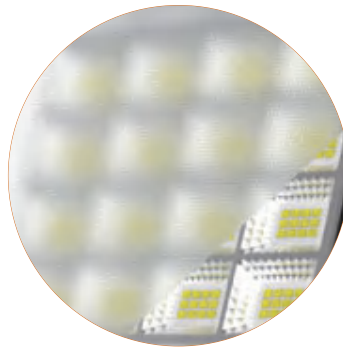
adapter cable

Individual 4.5 meters cable to connect solar panel and light fixture, It makes the installation more easier and flexible



motion sensor

Built in motion sensor program. off+100% power for 1 minute, or 30%+100% power when sensor is triggered.



woven glass

Lighting performance is becoming more uniformed with 4.0mm woven glass, and makes lights look more elegant.



indicator light

Different color of indicator lights shows the rest battery capacity , Convenient for maintenance.



switch button

Stainless steel button with rubber cap covered is adopted for easy operation.



waterproof connector

A special designed connector guarantees a high level of waterproof performance.



bracket cap

Bracket is stronger with cap ,easy to adjust the angle and more aesthetic.

IP67 standard.



VS



	Performance	VENUS Solar Flood Light	Other Models
LIGHTING	Lumens efficiency	● Up 180lm/W	● 120~150lm/W variously
	LED chip quality	● Big size chip,long lifetime	● Regular led chips, good lifetime
	UGR	● <18	● >22
	CRI	● >82	● 78
REMOTE CONTROL	Transmission distance	● Up to 25 meters	● Less than 8 meters
	Transmission direction	● 360 degrees, non-directional	● <5 degree, need to aim at the lamps
	Signal sensitivity	● High sensitivity	● Low sensitivity
	Power settable	● Yes	● Yes
	Time settable	● Yes	● Yes
	Motion function	● Yes	● No
	Control multiple lamps	● Yes	● No
Cost of remote	● High cost	● Cheap cost	
LIFEPO4 BATTERY	Lifetime (Cycles)	● >2000 cycles	● 500~1000 cycles variously
	Depth of Discharge	● Up to 100%	● 50%~90% variously
	Consistency of internal resistance	● Good	● Bad
	100% Quality Inspection	● Yes	● No
	Battery warranty	● 3 years	● 0~18 months variously
	Defective rate	● <0.2%	● 3%~8% variously
Battery cost	● High	● Low	
OTHERS	Housing painting quality	● Superb	● Good
	Housing material	● Thick / heavy	● Thin / light
	Screws used	● Stainless steel 304#	● Stainless steel 202# or iron
	Raw aluminium	● Brand new ADC12	● Recycled aluminium or ADC12 variously
	Price very competitive	● No	● Yes



 Dimension

APPLICATION

- * Temporary Tents Lighting
- * Pathway Lighting
- * Warehouse Lighting
- * Refugee Tents Lighting
- * Construction Sites Lighting
- * Bus Stations Lighting
- * Emergency Lighting
- * Garden Lighting
- * Hotel Lighting
- * Horse Stable Lighting



CHOICE GUIDE

Model	Luminous flux	Lighting area
V2-PRO	880lm	12 ~ 20 m ²
V4-PRO	1680lm	20 ~ 35 m ²
V6-PRO	2480lm	35~ 45 m ²
V8-PRO	3280lm	45 ~ 60 m ²



MADE IN CHINA



CONTACT US

E-ABLE POWER TECHNOLOGY CO., LTD

🌐 www.e-ablepower.com

☎ +86 0756 8530887 📠 +86 0756 8500385

📞 +86 15355589600

✉ sales@e-ablepower.com

📍 4F/4 Bldg, Xinli Feng Ind Park, 51 GeZhen Road
PingHu Town, LongGang Dis, Shenzhen, China



BSCI

Business Social Compliance Initiative